



**POLY WATERTEC**  
SANITARYWARE  
CATALOGUE

**2023**

P.E.F SEP 2023







## Watertec Sanitaryware. An inspiring journey...

Watertec began as a manufacturer of polymer-based product in 1997 and has since evolved into a complete provider of plumbing and bathroom solutions. We are a reputable company with a solid reputation in the market today, providing goods that live up to the 3H Promise of high performance, hygiene, and health.

As the industry leader in polymer-based bath fittings, we currently produce close to 32 million units. Our primary goal has always been to constantly improve and expand the selection of items we offer, both organic and inorganic.

The core of Watertec's purpose has always been environmental care. Since our company's founding in 1997, we have been committed to environmental responsibility and sustainable practises, from the selection of materials and product design to the use of technology and manufacturing processes.

We established our Sanitaryware line with the intention of extending our product line and offering our customers the best ceramic bathroom solutions as compared to the inferior brass fittings that dominated the market at the time. Its production uses a consistent set of fundamental components, including clay, kaolin, feldspar, and quartz, which are all renewable, natural minerals.

Watertec products are environmentally friendly, faultless in terms of design and functionality, and economical. Each ceramic object exemplifies the finest level of craftsmanship. Washbasins, toilet seats, closets, and cisterns are thoughtfully made with quality manual labour and skill.



## A blend of Quality & Affordability

Our products are precisely developed to carry out the main goal of facilitating not just elegance but performance as well. Vitreous China, Glazing Technologies, Flushing Innovations, and Thin Rim are some of the technologies and characteristics that were utilised in the design of these products.

At Watertec, we conduct a number of rigorous quality tests and checks to guarantee improved product quality. We provide goods that encourage the best possible hygiene in the bathroom using materials that have undergone scientific treatment. We create cutting-edge sanitaryware solutions with cutting-edge designs that combine outstanding quality with high aesthetics and ease. These products are a must-have for your lifestyle.

### **WATERTEC SANITARYWARE RANGE**

**Flushing Closets | Urinals | Pans**

**Wash Basins | Flushing Cisterns**









## The art of blending *Quality with Affordability*

**Ceramic vitreous china** is a polycrystalline ceramic product obtained through the high-temperature firing of a paste produced from substances like white clays and finely ground minerals like quartz, feldspar and kaolin in triaxial composition.

**Glazing** method enhances the physical performance of glazing on porcelain.

**Nano glaze technology** is a new generation anti-bacterial technology used to seal the microscopic pores of the ceramic surface. This makes it difficult for dirt and grime to settle on its surface.

**Full glaze trap** ensures better flushing and reduces the chances of soil returning to the bowl.

**Snow white technology** uses special pacifiers to enhance the gloss and white finish of the ceramics.

# CERAMIC SANITARYWARE WARRANTY CERTIFICATE

---

## **WARRANTY SERVICE:**

**To obtain warranty service contact:**

TOLL FREE NUMBER **1800 121 2191**

or through your dealer.





- CERAMIC BODY - 10 YEARS for residential / 5 YEARS for commercial
- MECHANICAL PARTS / SEAT COVERS - 2 YEARS
- EXCLUSIONS - the warranty is not applicable for rubber and plastic parts for internal fittings.

#### **WARRANTY TERMS:**

- The warranty is applicable from the date of purchase
- The customer must produce the GST invoice in original to avail warranty service
- The company is not liable for any damage out of faulty installation
- The warranty becomes null / void if installation is done by non-qualified plumber technician or if the installation procedure is not followed as laid down by the company
- The company is not liable for any civil / construction work required during installation of new products / repair of old products
- The company is not liable for any consequential expenses or damages
- The company is not responsible for defects / damages due to transportation/ improper installation / alterations / accidents / misuse or lack of proper maintenance
- If the manufacturing defect is seen within the first year of purchase on the ceramic product, the customer is entitled for free replacement. If the manufacturing defect is seen after one year of purchase and before the warranty period expires, the customer has to pay the company on proportion basis on current MRP for new replacement
- WATERTEC will at its choice, repair, replace or make appropriate adjustment where its inspection discloses any such defects occurring in normal usage and is not responsible for installation costs

#### **CARE AND CLEANING GUIDELINES:**

- Use warm water and liquid detergent to clean the surface
- Use powder detergent on a damp cloth to remove any residual plaster / white cement / putty.
- Clean the outside surface of the vitreous china ware with mild soap and warm water
- Wipe the entire surface with a clean, soft cloth
- Do not use abrasive cleaners which may damage the ceramic surface
- Do not allow cleaners with petroleum distillates to sit on the ceramic surface for long periods of time.
- Do not use metal tools or wire brushes to remove any plaster
- Do not use cement at any hollow portion of the vitreous china ware



# 360- DEGREE BENEFITS

OF WATERTEC SANITARYWARE





**Eco-friendly**



**High Performance  
Flush**



**Odourless**



**Dual Flushing  
Mechanism**



**Easy to Clean**



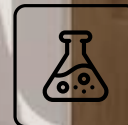
**Toilet Seats have a rimless  
smooth inner wall for greater  
hygiene and ease of cleaning**



**Compact basins  
and toilet seats**



**Water-saving**



**Exclusive resins in the  
seat covers make the products  
resistant to chemical agents  
that decolour seat covers**



**Seat Covers made of High-grade  
Engineering Polymer -  
ensures best comfort & fit**





# CONTENTS

14	WALL HUNG CLOSETS
16	EUROPEAN WESTERN CLOSET
19	URINAL
22	SQUATTING PAN
23	WALL HUNG SMALL BASIN
28	WALL HUNG CORNER BASIN
31	WALL HUNG WASH BASIN WITH FULL PEDESTAL
34	SEAT COVER
39	CISTERN
43	CONCEALED CISTERN
46	ACTUATOR PLATE
47	ACCESSORIES



### GLOBUS

Code: WCL 022

Size (LxWxH): 490x350x320 mm





## TRENTO-P

Code: WECO 028

Size (LxWxH): 540x360x400

525x370x420 / 510x365x400

490x365x400 / 555x360x385



## TRENTO-S

Code: WECO 029

Size (LxWxH): 540x360x400  
525x370x420 / 510x365x400  
490x365x400 / 555x360x385

## EFFO

Code: WECO 003

Size (LxWxH): 555x365x405 mm







## ANGLO INDIAN-P

Code: WECO 030

Size (LxWxH): 555x460x410 mm

## ANGLO INDIAN-S

Code: WECO 031

Size (LxWxH): 555x460x410 mm





**EVA**

Code: WCL 019

Size (LxWxH): 660x345x794 mm

*Urinal*







## LADIES URINAL

Code: WCL 039

Size (LxWxH): 445x353x100 mm

## SMALL URINAL

Code: PW 001

Size (LxWxH): 290x285x380 mm





## FLAT BACK

Code: WCL 037

Size (LxWxH): 355x275x455 mm

## RECO

Code: PW 002

Size (LxWxH): 335x295x550 mm





## ORISSA PAN 20"

Code: WECO 007

Size (LxWxH): 525x420x285 mm  
525x425x260 mm  
530x425x250 mm

## ORISSA PAN 23"

Code: WECO 008

Size (LxWxH): 587x450x310 mm  
590x440x370 mm  
585x445x310 mm





*Wall Hung Small Basin*





### NINO

Code: PW 003

Size (LxWxH): 310x310x130 mm

### SNOW

Code: WCL 049

Size (LxWxH): 370x300x190 mm





## **MARIZ**

Code: WCL 103

Size (LxWxH): 480x350x140 mm

## **REAL**

Code: WECO 014

Size (LxWxH): 470x335x180 mm







### ERAS

Code: WECO 010B

Size (LxWxH): 475x360x180 mm

### SAGO

Code: PW 004

Size (LxWxH): 360x260x130 mm





## PEARL

Code: WECO 015

Size (LxWxH): 400x320x145 mm

## VIVO

Code: PW 005

Size (LxWxH): 451x324x133 mm



## *Wall Hung Corner Basin*







## **ROMO**

Code: PW 006

Size (LxWxH): 415x340x135 mm

## **DOREA**

Code: WCL 095

Size (LxWxH): 565x480x182 mm





## ORCA

Code: WECO 013

Size (LxWxH): 380x440x190 mm

## ZONA

Code: PW 007

Size (LxWxH): 377x365x151 mm



*Wall Hung Wash Basin  
With Full Pedestal*



## WITH FULL PEDESTAL



### ERAS

Code: WECO 010

Size (LxWxH): 475x360x860 mm

### EAGO

Code: PW 008

Size (LxWxH):

565x430x850mm





## WITH FULL PEDESTAL

**FLORA**

Code: WECO 011

Size (LxWxH): 410x335x860 mm

**MAYLIN**

Code: WCL 053

Size (LxWxH):  
535x430x855mm**MOORE**

Code: WCL 052

Size (LxWxH):  
525x430x855mm

## *Seat Cover*





## IDEAL

Code: SC - 601001 WHITE

SC - 601002 COLOUR

Size (LxWxB): 480x380x30 mm

Available Colours: White, Moon Ivory, Blush Pink, Sage Green, Alpine Blue, New Berly Rose, Indian Ivory, Silky Off White, Ocean Blue, Neycer Blue & Pastel Green



## SQUATO

Code: SC - 601005

Size (LxW): 475x342 mm

Available Colour : White



SOFT  
CLOSING



## LEXO

Code: SC - 601006

Size (LxW): 445x353 mm

Available Colour : White

SOFT  
CLOSING

## RIVO

Code: SC - 601007

Size (LxW): 503x362 mm

Available Colour : White

SOFT  
CLOSING





## LIMO

Code: SC - 601008

Size (LxW): 454x355 mm

Available Colour : White



SOFT  
CLOSING



## SILO

Code: SC - 601009

Size (LxW): 483x356 mm

Available Colour : White



SOFT  
CLOSING





## SASO

Code: SC - 601010

Size (LxW): 475x340 mm

Available Colour : White



## SLEEK

Code: SC - 601003 WHITE

SC - 601004 COLOUR

Size (LxWxB): 440x370X16 mm

Available Colour : White, Moon Ivory,  
Sliky Off White, Indian Ivory





## WATERLINE SINGLE FLUSH CISTERN

Code: CSN - 602001 WHITE  
CSN - 602002 COLOUR

Size : Flush Cistern Tank Capacity: 10 Ltr  
Flushing Volume - Min 8 Ltr

Available Colours: White, Moon Ivory, Blush Pink,  
Sage Green, Alpine Blue, New Berly Rose,  
Indian Ivory, Silky Off White, Ocean Blue,  
Neycer Blue & Pastel Green



## SLEEK SINGLE FLUSH CISTERN

Code: CSN - 602003 WHITE

CSN - 602004 COLOUR

Size : Flush Cistern Tank Capacity: 8 Ltr

Flushing Volume - Min 7 Ltr

Available Colour: White, Moon Ivory, Indian Ivory



## SQ SERIES SINGLE FLUSH CISTERN TANK

Code: SQ 701001

Size : Tank Capacity: 7 Ltr

Flushing Volume - Min 6 Ltr

Available Colour : White







## WATERLINE DUAL FLUSH CISTERN

Code: CSN-602005 WHITE

Size : Tank Capacity: 10 Ltr

Flushing Volume Half - Min 4 Ltr

Flushing Volume Full - Min 8 Ltr

Available Colour : White,



## WATERLINE DUAL FLUSH CISTERN

Code: CSN - 602006 COLOUR

Size : Tank Capacity: 10 Ltr

Flushing Volume Half - Min 4 Ltr

Flushing Volume Full - Min 8 Ltr

Available Colour : White,Almond



## REGAL DUAL FLUSH CISTERN

Size : Tank Capacity: 8 Ltr

Flushing Volume Half-min 3 Ltr

Flushing Volume Full - Min 6 Ltr



ANTI BACTERIAL



ANTIFUNGAL



ANTI-ODOUR



CERTIFIED



Code: CSN-602027  
(BLACK)



Code: CSN-602028  
(GREEN)



Code: CSN-602029  
(GRAY)



Code: CSN-602030  
(IVORY)



Code: CSN-602031  
(MAGENTA)



Code: CSN-602032  
(ORANGE)



Code: CSN-602033  
(RED)



Code: CSN-602034  
(BLUE)



Code: CSN-602035  
(WHITE)



Code: CSN-602036  
(YELLOW)



Code: CSN-602037  
(FULL IVORY)

## *Concealed Cistern*





**FULL FRAME FOR  
CONCEALED CISTERN**

Code: FRM 602039FF



**HALF FRAME FOR  
CONCEALED CISTERN**

Code: FRM 602039HF

## FULL FRAME / HALF FRAME ACCESSORIES

### DISCHARGE PIPE SET



BEND DISCHARGE  
PIPE 90MM

STRAIGHT  
DISCHARGE  
PIPE 100MM

PIPE DUMMY  
ACC - 602040

C CLAMP

SS RACK BOLT  
ACC - 602041





## CONCEALED CISTERN

Code: CSN 602038

510mm x 80mm x 640mm

Tank Capacity - 8 Ltr

Flushing Volume Half - Min 3 Lit

Flushing Volume Full - Min 6 Lit

## CONCEALED CISTERN ACCESSORIES



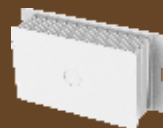
BEND  
PIPE



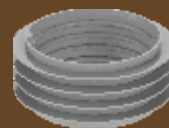
STRAIGHT  
PIPE



TANK OUTLET  
DUMMY



SPACER BOX



BELLOW  
WASHER



MOUNTING  
CLAMP

CHROME & WHITE



C 99H  
W 99H



C 99Q  
W 99Q



C 99M  
W 99M



C 99E  
W 99E



C 99W  
W 99W



C 99BH

BLACK



B 99H



B 99Q



B 99E

GREY



G 99E



G 99H

GOLD



GO 99E MRP



GO 99H MRP

PNEUMATIC PUSH PLATE



PN 99W



PN 99B



PN 99R

AVAILABLE COLOUR : W - WHITE | C - CHROME | B - BLACK | G - GREY | GO - GOLD | R - RED



## P TRAP - BIG (SET OF 4 PCS)

Code: ALD - 701036

## P TRAP - SMALL (SET OF 4 PCS)

Code: ALD - 701035



## LONG "L" BEND PIPE

Code: ALD - 701034

AVAILABLE  
COLOUR



White, Almond



ISO 9001 COMPANY



MEMBER OF IPA

en-WATERTEC Sanitaryware/Subject to technical alterations and colour differences due to the printing process.



watertecind



watertec-ind



Watertecind



watertecindia

**WATERTEC®**  
GROUP

**WATERTEC (INDIA) PVT. LTD. Corporate Office:** Watertec India (Pvt) Ltd, No. 766 & 767, 3<sup>rd</sup> floor, Puliakulam Road, Papanayakanpalayam, Coimbatore 641 037

**E-mail:** [marketing@watertecindia.com](mailto:marketing@watertecindia.com) | **Visit:** [watertecindia.com](http://watertecindia.com)

**Toll-free:** 1800 121 2191